

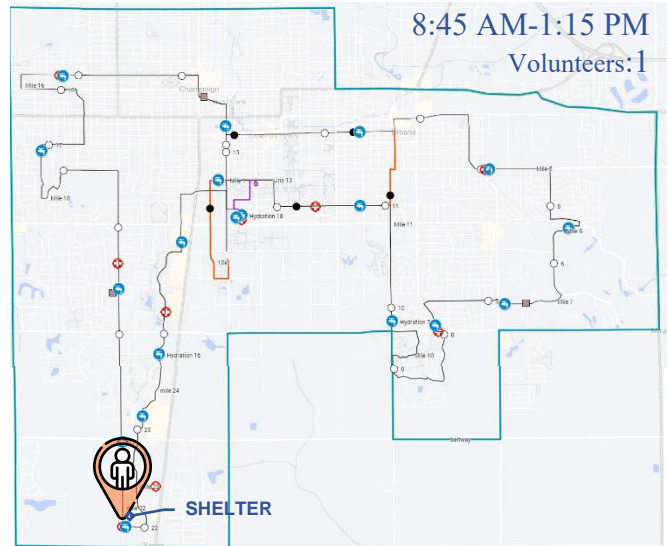
*Thank you for volunteering!*

This sheet provides information specific to your assignment. On race day you will receive the following texts and/or phone calls: reminder of your assigned time, volunteer shift start, notification to close your intersection to traffic, and notification that the race has begun.

**You will be released from your assignment by one of our vans.** Please do not leave until this happens.

During the event you may also receive texts or phone calls about situations on the course, impending weather readiness, what to do if shelters are activated, etc.

Let us know if you have any questions - and have fun!

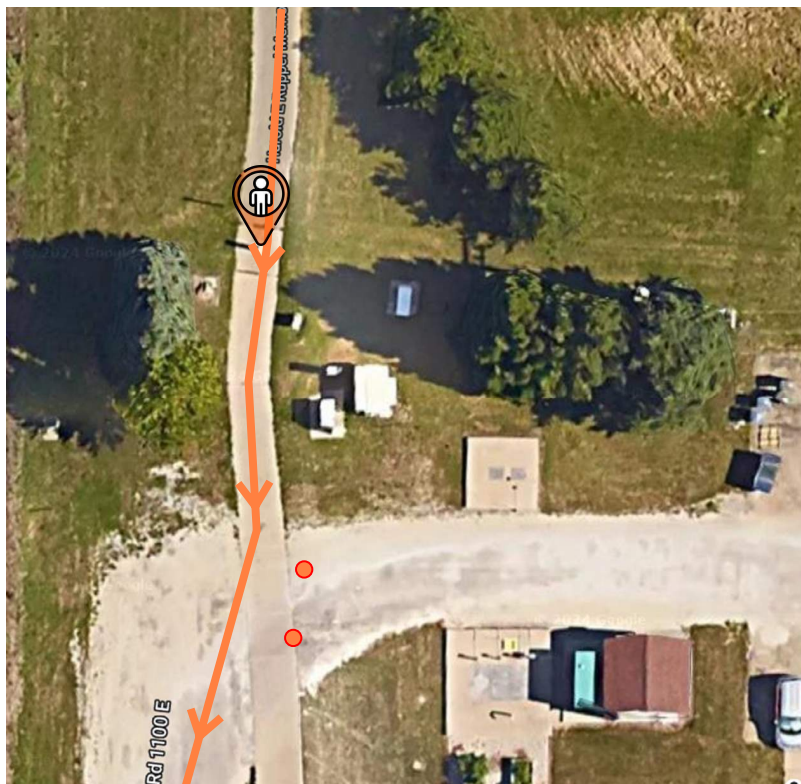


### IMPACT TIMES (estimates based on previous events)

Course Closure	8:55 AM
Lead Participant	9:25 AM
Last participant	1:00 PM
Estimated Open	1:40 PM

### IMPORTANT LOCATIONS:

Hydration Station:	0.1 miles forward
Medical Station:	0.1 miles forward
Assigned Shelter:	Savoy Recreation Center



<b>LEGEND</b>	SUGGESTED POSITION	VEHICLE FLOW
10k half full COURSE	medical STATIONS	no traffic direction
hydration STATIONS	cones	VEHICLE FLOW (ALTERED)
barricade EQUIPMENT	TRAFFIC CROSSING COURSE	

**INTERSECTION:** This position is involved in full marathon course approximately within mile 21. It is at a low volume intersection.

**RUNNERS:** Runners will be on the bike path. Volunteer will WARN runners of ballards on the bike path.

**VEHICLES:** no vehicles